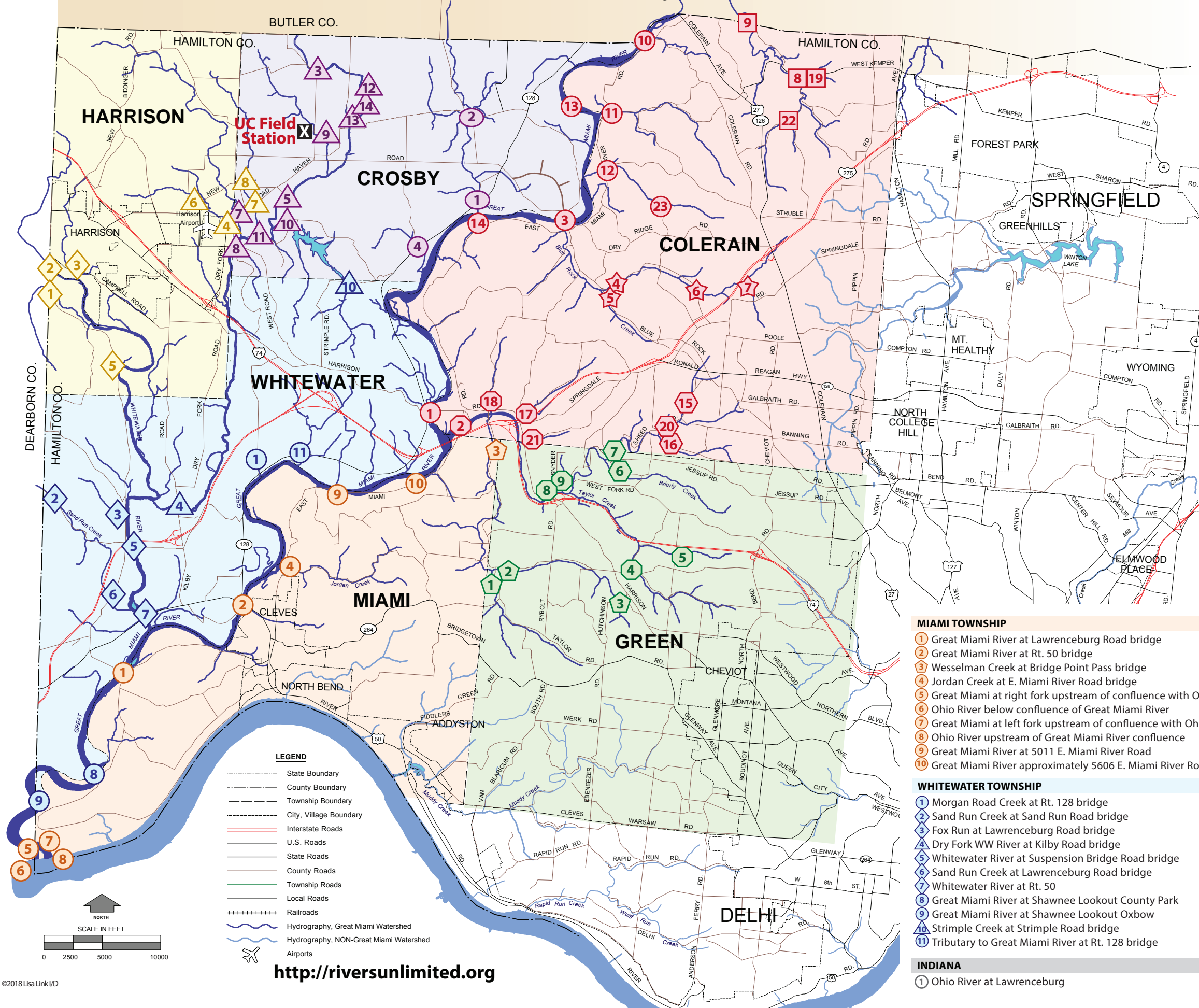


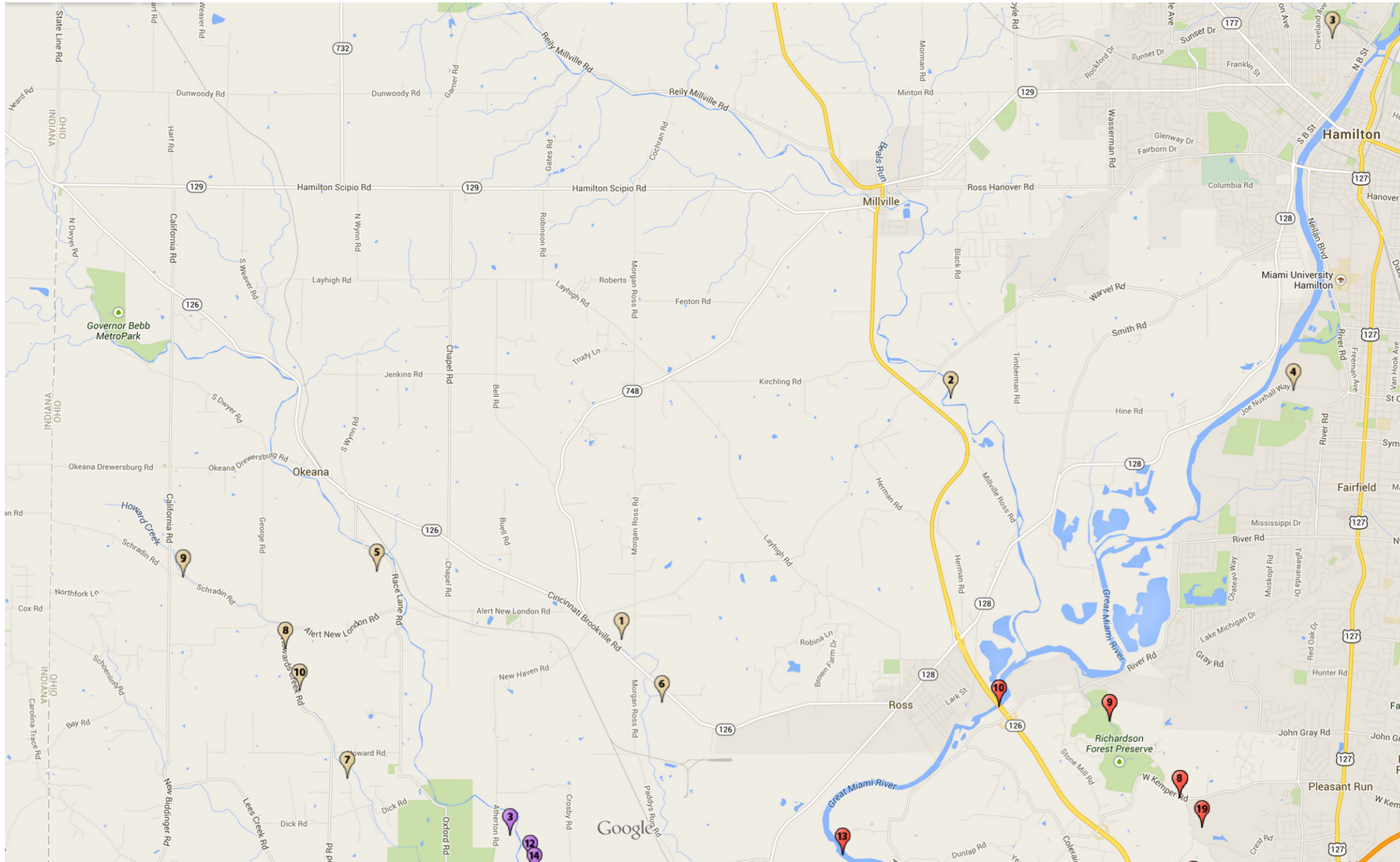
# GREAT MIAMI RIVER WATERSHED Hamilton County



- COLERAIN TOWNSHIP**
- ① Great Miami River at Harrison Avenue bridge
  - ② Taylor Creek at E. Miami River Road bridge
  - ③ Great Miami River at Blue Rock Road bridge
  - ④ N. Branch Blue Rock Creek at Sheits Road / Blue Rock Road intersection
  - ⑤ Blue Rock Creek at Sheits Road
  - ⑥ N. Branch Blue Rock Creek at Newberry Wildlife Refuge
  - ⑦ N. Branch Blue Rock Creek at Colerain Township Park
  - ⑧ Banklick Creek at Kemper Road / Bank Road intersection
  - ⑨ Banklick Creek at Richardson Preserve
  - ⑩ Great Miami River just upstream of Old Colerain Avenue bridge
  - ⑪ Dunlap Run at E. Miami River Road bridge
  - ⑫ Owl Creek at E. Miami River Road bridge
  - ⑬ Great Miami River at Heritage Park
  - ⑭ Great Miami River at Obergeising Complex (Dravo Park)
  - ⑮ Sheed Creek adjacent to Sheed Road b/w Hanley and Desertgold
  - ⑯ Hubble Road Creek just before confluence with Sheed Creek
  - ⑰ Forfeit Creek at Forfeit Run Road / Harrison Road bridge
  - ⑱ Eagle Creek at Eagle Creek Road / Harrison Road bridge
  - ⑲ Tributary to Banklick adjacent to W. Kemper Road near Bank Road
  - ⑳ Sheed Creek just upstream of Hubble Creek confluence
  - ㉑ Mullen Creek adjacent to Mullen Road near Harrison Avenue
  - ㉒ Banklick Creek at Bank Road / Hughes Road intersection
  - ㉓ Owl Creek at Owl Creek Road bridge
- CROSBY TOWNSHIP**
- ① Paddy's Run at Rt. 128 bridge
  - ② Paddy's Run at Willey Road bridge
  - ③ Dry Fork WW River at Oxford Road bridge
  - ④ Tributary to Great Miami River at Rt. 128 bridge near Crosby Road
  - ⑤ Dry Fork WW River at Mt. Hope Road bridge
  - ⑥ East of Lees Creek at Dry Fork Road bridge
  - ⑦ Lees Creek at Dry Fork Road bridge
  - ⑧ Dry Fork WW River at West Road bridge
  - ⑨ Howards Creek at UC Field Station
  - ⑩ Miami Whitewater Forest Lake outflow just below dam
  - ⑪ Dry Fork WW River trib. - NE Lee Creek @ Timberlakes Drive
  - ⑫ Dry Fork WW River downstream of Atherton Road bridge
  - ⑬ Dry Fork WW River upstream of Wiley Road bridge
  - ⑭ Farm tributary between Atherton and Willey Roads
- GREEN TOWNSHIP**
- ① Taylor Road Creek at Taylor Road bridge
  - ② Wesselman Creek just upstream of Taylor Road bridge
  - ③ Wesselman Creek at 4575 Hutchinson Road
  - ④ Taylor Creek at intersection of Reemlin and Johnson Roads
  - ⑤ Tributary to Taylor Creek at 700' east of 5200 Race Road
  - ⑥ Brierly Creek just upstream of confluence with Sheed Creek
  - ⑦ Sheed Creek just upstream of Brierly Creek confluence
  - ⑧ Taylor Creek at Harrison Avenue Bridge adjacent to Sheed Road
  - ⑨ Tributary to Taylor Creek adjacent to Snyder Road at Sheed Road
- HARRISON TOWNSHIP**
- ① Jameson Creek at Lawrenceburg Road bridge
  - ② Whitewater River at State Street bridge
  - ③ Tributary to Whitewater River near 11801 Campbell Road
  - ④ Lees Creek Tributary at Dry Fork Road bridge
  - ⑤ Whitewater River at 7777 Lawrenceburg Road
  - ⑥ Southwest Lee Creek tributary at New Haven Road bridge
  - ⑦ Tributary to Dry Fork WW River, east of Lee Creek at Dry Fork Rd bridge
  - ⑧ Dry Fork Whitewater River tributary - NE Lee Creek at New Haven Rd
- MIAMI TOWNSHIP**
- ① Great Miami River at Lawrenceburg Road bridge
  - ② Great Miami River at Rt. 50 bridge
  - ③ Wesselman Creek at Bridge Point Pass bridge
  - ④ Jordan Creek at E. Miami River Road bridge
  - ⑤ Great Miami at right fork upstream of confluence with Ohio
  - ⑥ Ohio River below confluence of Great Miami River
  - ⑦ Great Miami at left fork upstream of confluence with Ohio
  - ⑧ Ohio River upstream of Great Miami River confluence
  - ⑨ Great Miami River at 5011 E. Miami River Road
  - ⑩ Great Miami River approximately 5606 E. Miami River Road
- WHITWATER TOWNSHIP**
- ① Morgan Road Creek at Rt. 128 bridge
  - ② Sand Run Creek at Sand Run Road bridge
  - ③ Fox Run at Lawrenceburg Road bridge
  - ④ Dry Fork WW River at Kilby Road bridge
  - ⑤ Whitewater River at Suspension Bridge Road bridge
  - ⑥ Sand Run Creek at Lawrenceburg Road bridge
  - ⑦ Whitewater River at Rt. 50
  - ⑧ Great Miami River at Shawnee Lookout County Park
  - ⑨ Great Miami River at Shawnee Lookout Oxbow
  - ⑩ Strimple Creek at Strimple Road bridge
  - ⑪ Tributary to Great Miami River at Rt. 128 bridge
- INDIANA**
- ① Ohio River at Lawrenceburg
- LEGEND**
- State Boundary
  - County Boundary
  - Township Boundary
  - City, Village Boundary
  - == Interstate Roads
  - == U.S. Roads
  - == State Roads
  - == County Roads
  - == Township Roads
  - == Local Roads
  - ++++ Railroads
  - ~ Hydrography, Great Miami Watershed
  - ~ Hydrography, NON-Great Miami Watershed
  - ✈ Airports
- Watershed Key**
- Great Miami Watershed
  - △ Dry Fork WW River Watershed
  - Taylor Creek Watershed
  - ◇ Whitewater River Watershed
  - Banklick Subwatershed
  - ☆ Blue Rock Subwatershed
  - Paddys Run Subwatershed
  - Sheed Creek Subwatershed
  - Wesselman Creek Subwatershed

# GREAT MIAMI RIVER WATERSHED Butler County

# MILL CREEK



## BUTLER COUNTY

- 1 Paddys Run in Shandon
- 2 Indian Creek at New London Road
- 3 Two Mile Creek at spillway above bridge, Cleveland Avenue, Hamilton
- 4 Great Miami below Hamilton Waste Water Treatment Facility
- 5 Dry Fork Creek at Race Lane Road bridge
- 6 Paddys Run at Rt. 126 bridge
- 7 Howards Creek at Howard Road bridge
- 8 Howards Creek at Schradin Road bridge
- 9 Howards Creek at California Road bridge
- 10 Tributary to Howards Creek at bridge near 4075 Howards Creek Road

## Great Miami Watershed Key

- |                               |                                |
|-------------------------------|--------------------------------|
| ○ Great Miami Watershed       | □ Banklick Subwatershed        |
| △ Dry Fork WW River Watershed | ☆ Blue Rock Subwatershed       |
| ○ Taylor Creek Watershed      | ○ Paddys Run Subwatershed      |
| ◇ Whitewater River Watershed  | ○ Sheed Creek Subwatershed     |
|                               | ○ Wesselman Creek Subwatershed |

## MILL CREEK

- 1 Mill Creek upstream Confluence Project at Crescentville Rd
- 2 Mill Creek downstream of Confluence Project at Kemper Rd
- 3 East Fork Mill Creek upstream Confluence Project
- 4 East Fork Mill Creek Confluence Project area
- 5 Mill Creek Confluence Project arm

- 1
- 3
- 5
- 4
- 2